

# MARKET HISTORY

Includes data through 12/2017

## Burlington County, NJ Single-Family



## Market History Report

The Market History Report details current and historical statistical information for single-family listings recorded within TREND. This statistical report is organized by county and contains valuable month-over-month, year-over-year statistical information for each of the last 10 years. The Market History Report details activity in a particular market over a 10-year period – from where it's been to where it's at now. The easy-to-read month-over-month, year-over-year chart and graph enables you to clearly identify the year-over-year changes while accounting for seasonal and market trends.

Utilizing the report allows you to gain a better understanding of your market. This will give you new insights and increase your company's value when working with consumers. This powerful report is provided exclusively to TREND members.

## Contents

Total Inventory .....	3
Inventory Accumulation .....	4
Pending Units .....	5
Settled Units .....	6
Total Settled Volume .....	7
Median Settled Price.....	8
Average Settled Price .....	9
Average Settled Price / Original Price.....	10

## Definitions

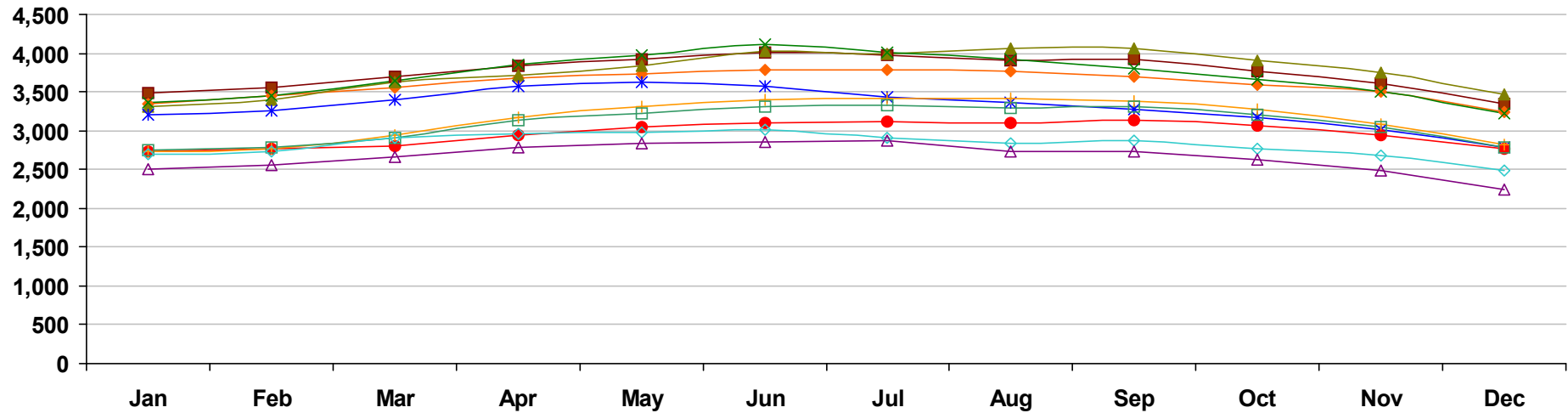
<b>Total Inventory</b>	The number of active single-family listings on the market on the last day of the specified month.
<b>Inventory Accumulation</b>	The number of months it would take to exhaust the current supply of single-family listings at the current absorption rate.
<b>Absorption Rate</b>	The average number of single-family listings sold in the market per month over the previous 12 months.
<b>Pending Units</b>	The number of single-family listings with Pending dates during the specified month.
<b>Settled Units</b>	The number of single-family listings with Settled dates during the specified month.
<b>Total Settled Volume</b>	The total dollar volume of single-family listings that have settled during the specified month.

<b>Median Settled Price</b>	The median price that single-family listings settled for during the specified month. Determined by arranging all Settled Listings in numerical order by price and then selecting the middle value.
<b>Average Settled Price</b>	The average price that single-family listings settled for during the specified month. Determined by dividing the Total Settled Volume by the number of Settled Listings.
<b>Average Settled Price / Original Price</b>	The average percentage of the Original Price that single-family listings settled for during the specified month. This number is determined by dividing the Settled Price by the Original Price for every listing, summing them and then dividing by the number of settled listings. TREND excludes listings if the Settled Price is greater than 150 percent or less than 50 percent of the Original Price. This ensures the percentage is more representative of listings in the market area.
<b>Percent Change</b>	The change in value as compared to the same month of the previous year. Indicated by +/-0.0%.

## Notes on Statistics

- All statistics are from TREND's monthly Residential Activity Reports. Due to the fluid nature of MLS data, insignificant statistical variations may occur with regard to sales activity between the various TREND reports.
- Mobile homes and condominiums are excluded from these statistics.
- This report includes information on listings and transactions facilitated through TREND and does not reflect the total number of listings and transactions of a given market area.
- All monetary statistics are rounded to the nearest \$10.

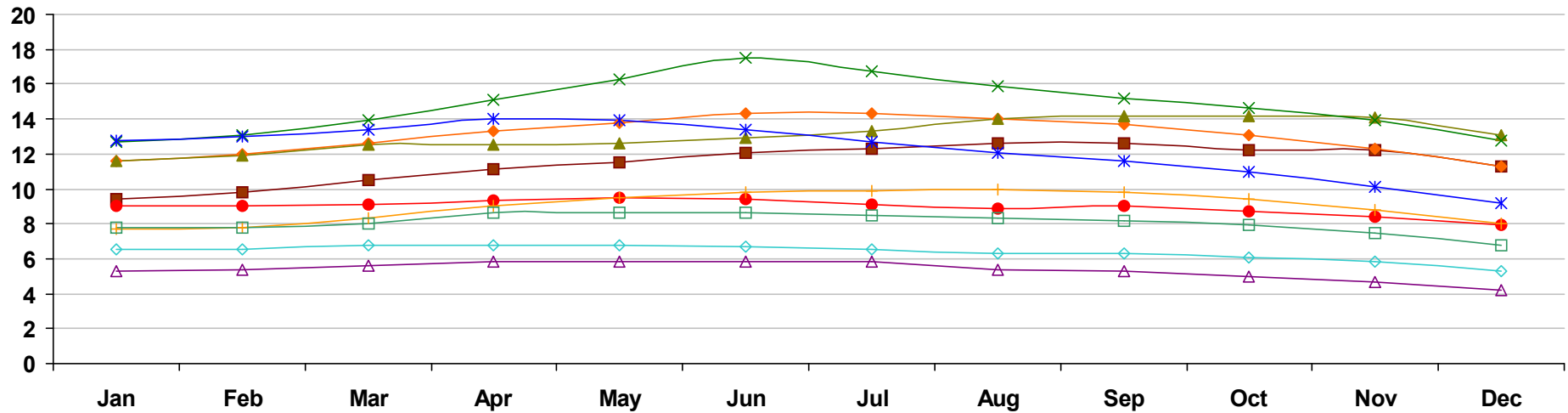
# Burlington County, NJ - Single-Family - Total Inventory



	Jan	Feb	Mar	Apr	May	Jun	Jul	Aug	Sep	Oct	Nov	Dec
■ 2008	3,480 13.2%	3,561 12.1%	3,700 9.2%	3,843 5.8%	3,917 1.4%	4,009 0.2%	3,968 -1.3%	3,908 -2.9%	3,920 -2.2%	3,767 -4.1%	3,606 -4.5%	3,336 -2.9%
◆ 2009	3,342 -4.0%	3,445 -3.3%	3,558 -3.8%	3,671 -4.5%	3,725 -4.9%	3,777 -5.8%	3,785 -4.6%	3,765 -3.7%	3,690 -5.9%	3,590 -4.7%	3,494 -3.1%	3,232 -3.1%
▲ 2010	3,311 -0.9%	3,390 -1.6%	3,623 1.8%	3,719 1.3%	3,837 3.0%	4,029 6.7%	3,997 5.6%	4,069 8.1%	4,058 10.0%	3,896 8.5%	3,752 7.4%	3,461 7.1%
✕ 2011	3,361 1.5%	3,450 1.8%	3,642 0.5%	3,854 3.6%	3,974 3.6%	4,108 2.0%	4,004 0.2%	3,923 -3.6%	3,793 -6.5%	3,666 -5.9%	3,498 -6.8%	3,216 -7.1%
✱ 2012	3,206 -4.6%	3,265 -5.4%	3,394 -6.8%	3,573 -7.3%	3,625 -8.8%	3,564 -13.2%	3,426 -14.4%	3,370 -14.1%	3,277 -13.6%	3,172 -13.5%	3,014 -13.8%	2,782 -13.5%
● 2013	2,724 -15.0%	2,763 -15.4%	2,810 -17.2%	2,940 -17.7%	3,051 -15.8%	3,093 -13.2%	3,122 -8.9%	3,100 -8.0%	3,127 -4.6%	3,067 -3.3%	2,935 -2.6%	2,762 -0.7%
✚ 2014	2,725 0.0%	2,767 0.1%	2,933 4.4%	3,174 8.0%	3,313 8.6%	3,404 10.1%	3,421 9.6%	3,410 10.0%	3,378 8.0%	3,268 6.6%	3,077 4.8%	2,812 1.8%
◻ 2015	2,755 1.1%	2,781 0.5%	2,908 -0.9%	3,137 -1.2%	3,224 -2.7%	3,310 -2.8%	3,330 -2.7%	3,288 -3.6%	3,308 -2.1%	3,209 -1.8%	3,053 -0.8%	2,791 -0.7%
◇ 2016	2,699 -2.0%	2,735 -1.7%	2,913 0.2%	2,960 -5.6%	2,983 -7.5%	3,018 -8.8%	2,905 -12.8%	2,843 -13.5%	2,874 -13.1%	2,764 -13.9%	2,683 -12.1%	2,481 -11.1%
△ 2017	2,497 -7.5%	2,565 -6.2%	2,653 -8.9%	2,783 -6.0%	2,828 -5.2%	2,857 -5.3%	2,865 -1.4%	2,737 -3.7%	2,736 -4.8%	2,619 -5.2%	2,490 -7.2%	2,233 -10.0%

Market History Report © 2017 TREND. Compiled 1/10/2018. Information deemed reliable, but not guaranteed. Non-members contact TREND for reprint permission.

# Burlington County, NJ - Single-Family - Inventory Accumulation

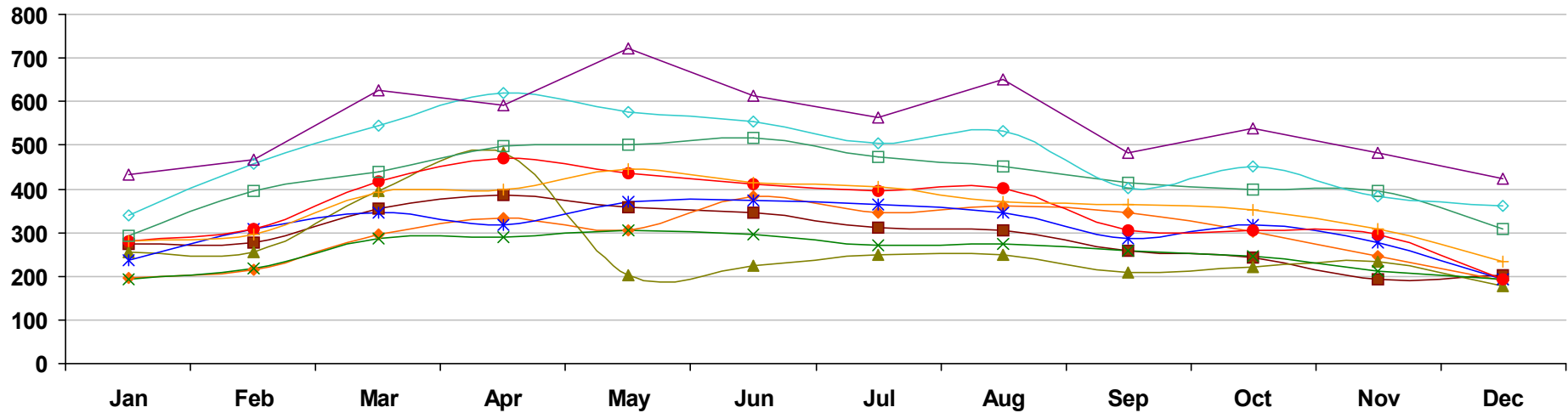


	Jan	Feb	Mar	Apr	May	Jun	Jul	Aug	Sep	Oct	Nov	Dec
2008	9.4 34.3%	9.8 34.2%	10.5 34.6%	11.1 30.6%	11.5 25.0%	12.1 22.2%	12.3 23.0%	12.6 23.5%	12.6 22.3%	12.2 19.6%	12.2 23.2%	11.3 22.8%
2009	11.6 23.4%	12.0 22.4%	12.6 20.0%	13.3 19.8%	13.8 20.0%	14.3 18.2%	14.3 16.3%	14.0 11.1%	13.7 8.7%	13.1 7.4%	12.3 0.8%	11.3 0.0%
2010	11.6 0.0%	11.9 -0.8%	12.5 -0.8%	12.5 -6.0%	12.6 -8.7%	12.9 -9.8%	13.3 -7.0%	14.0 0.0%	14.2 3.6%	14.2 8.4%	14.1 14.6%	13.1 15.9%
2011	12.7 9.5%	13.1 10.1%	13.9 11.2%	15.1 20.8%	16.3 29.4%	17.5 35.7%	16.7 25.6%	15.9 13.6%	15.2 7.0%	14.6 2.8%	13.9 -1.4%	12.8 -2.3%
2012	12.8 0.8%	13.0 -0.8%	13.4 -3.6%	14.0 -7.3%	13.9 -14.7%	13.4 -23.4%	12.7 -24.0%	12.1 -23.9%	11.6 -23.7%	11.0 -24.7%	10.1 -27.3%	9.2 -28.1%
2013	9.0 -29.7%	9.0 -30.8%	9.1 -32.1%	9.3 -33.6%	9.5 -31.7%	9.4 -29.9%	9.1 -28.3%	8.9 -26.4%	9.0 -22.4%	8.7 -20.9%	8.4 -16.8%	7.9 -14.1%
2014	7.7 -14.4%	7.8 -13.3%	8.3 -8.8%	9.0 -3.2%	9.5 0.0%	9.8 4.3%	9.9 8.8%	10.0 12.4%	9.8 8.9%	9.4 8.0%	8.8 4.8%	8.0 1.3%
2015	7.8 1.3%	7.8 0.0%	8.0 -3.6%	8.6 -4.4%	8.6 -9.5%	8.6 -12.2%	8.5 -14.1%	8.3 -17.0%	8.2 -16.3%	7.9 -16.0%	7.5 -14.8%	6.8 -15.0%
2016	6.5 -16.7%	6.5 -16.7%	6.8 -15.0%	6.8 -20.9%	6.8 -20.9%	6.7 -22.1%	6.5 -23.5%	6.3 -24.1%	6.3 -23.2%	6.1 -22.8%	5.8 -22.7%	5.3 -22.1%
2017	5.3 -18.5%	5.4 -16.9%	5.6 -17.6%	5.8 -14.7%	5.8 -14.7%	5.8 -13.4%	5.8 -10.8%	5.4 -14.3%	5.3 -15.9%	5.0 -18.0%	4.7 -19.0%	4.2 -20.8%

Market History Report © 2017 TREND. Compiled 1/10/2018. Information deemed reliable, but not guaranteed. Non-members contact TREND for reprint permission.

TREND • 660 American Avenue, Suite 203 • King of Prussia, PA 19406 • 1-877-330-9900 • www.trendmls.com

# Burlington County, NJ - Single-Family - Pending Units

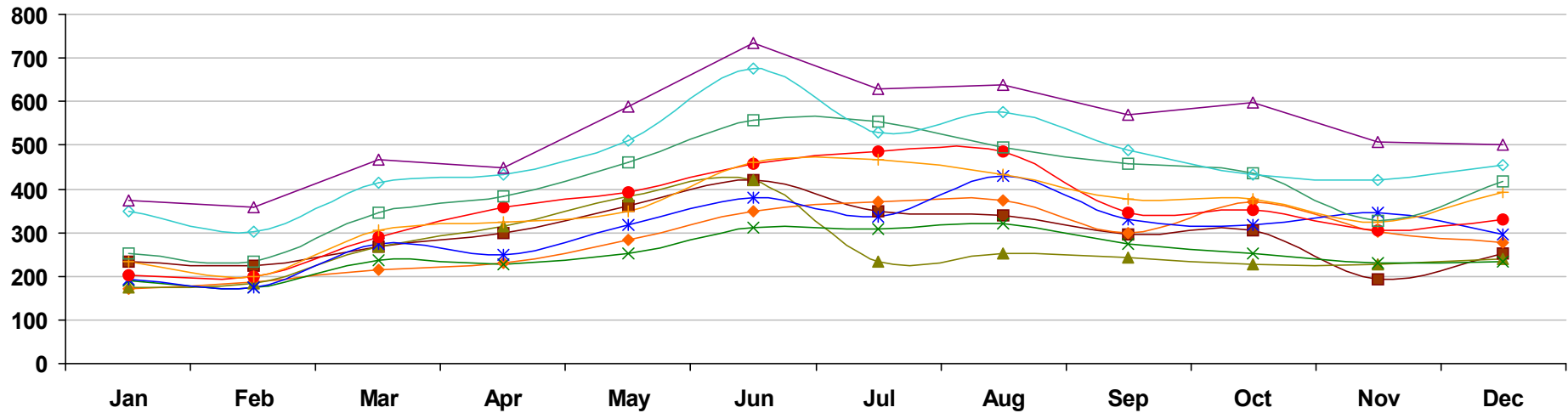


	Jan	Feb	Mar	Apr	May	Jun	Jul	Aug	Sep	Oct	Nov	Dec
2008	274 -28.3%	277 -26.9%	355 -23.5%	386 -10.9%	359 -20.4%	345 -20.0%	311 -24.1%	304 -6.5%	258 -10.7%	244 -24.5%	194 -30.2%	202 -4.3%
2009	196 -28.5%	214 -22.7%	297 -16.3%	332 -14.0%	304 -15.3%	383 11.0%	346 11.3%	362 19.1%	344 33.3%	301 23.4%	245 26.3%	189 -6.4%
2010	255 30.1%	256 19.6%	395 33.0%	483 45.5%	203 -33.2%	224 -41.5%	250 -27.7%	248 -31.5%	210 -39.0%	222 -26.2%	233 -4.9%	178 -5.8%
2011	193 -24.3%	218 -14.8%	286 -27.6%	289 -40.2%	306 50.7%	295 31.7%	270 8.0%	274 10.5%	259 23.3%	246 10.8%	212 -9.0%	194 9.0%
2012	237 22.8%	307 40.8%	347 21.3%	317 9.7%	370 20.9%	375 27.1%	365 35.2%	347 26.6%	287 10.8%	316 28.5%	276 30.2%	193 -0.5%
2013	281 18.6%	308 0.3%	416 19.9%	470 48.3%	436 17.8%	410 9.3%	394 7.9%	403 16.1%	304 5.9%	306 -3.2%	295 6.9%	193 0.0%
2014	279 -0.7%	295 -4.2%	392 -5.8%	397 -15.5%	444 1.8%	414 1.0%	405 2.8%	369 -8.4%	365 20.1%	353 15.4%	307 4.1%	235 21.8%
2015	293 5.0%	395 33.9%	438 11.7%	497 25.2%	500 12.6%	517 24.9%	472 16.5%	452 22.5%	414 13.4%	399 13.0%	396 29.0%	309 31.5%
2016	339 15.7%	458 15.9%	545 24.4%	618 24.3%	575 15.0%	555 7.4%	503 6.6%	533 17.9%	403 -2.7%	451 13.0%	384 -3.0%	361 16.8%
2017	433 27.7%	467 2.0%	625 14.7%	591 -4.4%	723 25.7%	613 10.5%	564 12.1%	651 22.1%	484 20.1%	539 19.5%	481 25.3%	423 17.2%

Market History Report © 2017 TREND. Compiled 1/10/2018. Information deemed reliable, but not guaranteed. Non-members contact TREND for reprint permission.

TREND • 660 American Avenue, Suite 203 • King of Prussia, PA 19406 • 1-877-330-9900 • www.trendmls.com

# Burlington County, NJ - Single-Family - Settled Units

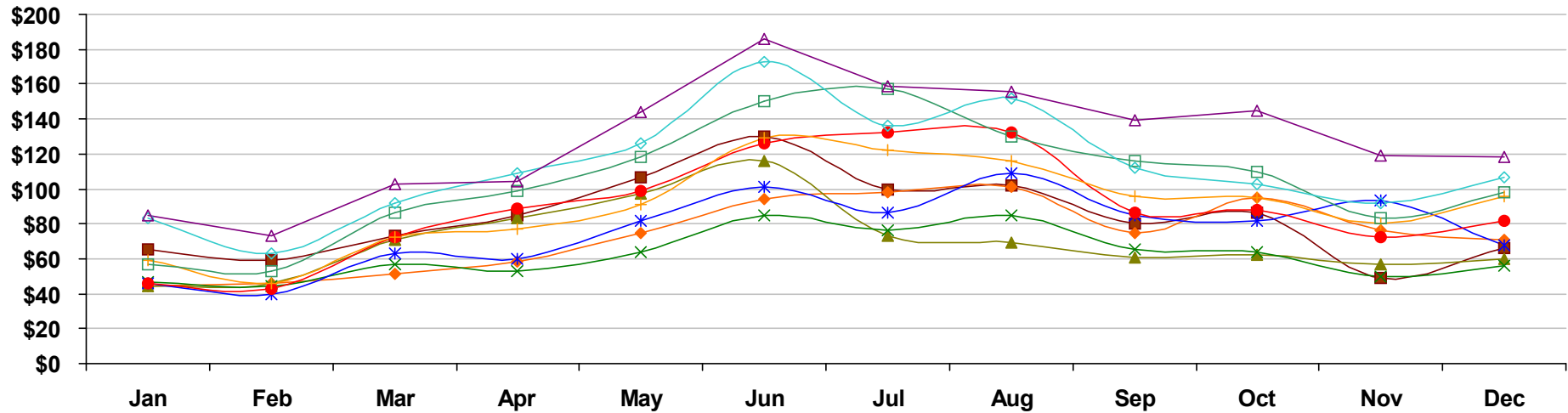


	Jan	Feb	Mar	Apr	May	Jun	Jul	Aug	Sep	Oct	Nov	Dec
■ 2008	235 -7.8%	223 -32.4%	268 -32.0%	299 -21.7%	361 -14.0%	420 -20.9%	348 -25.2%	339 -28.3%	295 1.7%	305 -7.3%	192 -44.8%	251 -4.6%
◆ 2009	170 -27.7%	186 -16.6%	216 -19.4%	230 -23.1%	282 -21.9%	349 -16.9%	371 6.6%	375 10.6%	299 1.4%	369 21.0%	303 57.8%	276 10.0%
▲ 2010	175 2.9%	185 -0.5%	268 24.1%	314 36.5%	382 35.5%	421 20.6%	235 -36.7%	251 -33.1%	243 -18.7%	228 -38.2%	226 -25.4%	239 -13.4%
✕ 2011	191 9.1%	174 -5.9%	238 -11.2%	227 -27.7%	251 -34.3%	310 -26.4%	307 30.6%	321 27.9%	274 12.8%	253 11.0%	231 2.2%	233 -2.5%
✱ 2012	194 1.6%	173 -0.6%	273 14.7%	248 9.3%	316 25.9%	379 22.3%	335 9.1%	429 33.6%	329 20.1%	316 24.9%	347 50.2%	296 27.0%
● 2013	203 4.6%	200 15.6%	291 6.6%	358 44.4%	391 23.7%	458 20.8%	486 45.1%	485 13.1%	345 4.9%	353 11.7%	304 -12.4%	329 11.1%
✚ 2014	234 15.3%	199 -0.5%	305 4.8%	323 -9.8%	348 -11.0%	462 0.9%	466 -4.1%	434 -10.5%	378 9.6%	378 7.1%	324 6.6%	391 18.8%
◻ 2015	252 7.7%	233 17.1%	346 13.4%	383 18.6%	462 32.8%	558 20.8%	553 18.7%	495 14.1%	458 21.2%	436 15.3%	328 1.2%	417 6.6%
◊ 2016	348 38.1%	302 29.6%	415 19.9%	434 13.3%	511 10.6%	675 21.0%	528 -4.5%	577 16.6%	489 6.8%	433 -0.7%	419 27.7%	453 8.6%
△ 2017	375 7.8%	359 18.9%	468 12.8%	449 3.5%	587 14.9%	735 8.9%	628 18.9%	638 10.6%	571 16.8%	597 37.9%	507 21.0%	501 10.6%

Market History Report © 2017 TREND. Compiled 1/10/2018. Information deemed reliable, but not guaranteed. Non-members contact TREND for reprint permission.

TREND • 660 American Avenue, Suite 203 • King of Prussia, PA 19406 • 1-877-330-9900 • www.trendmls.com

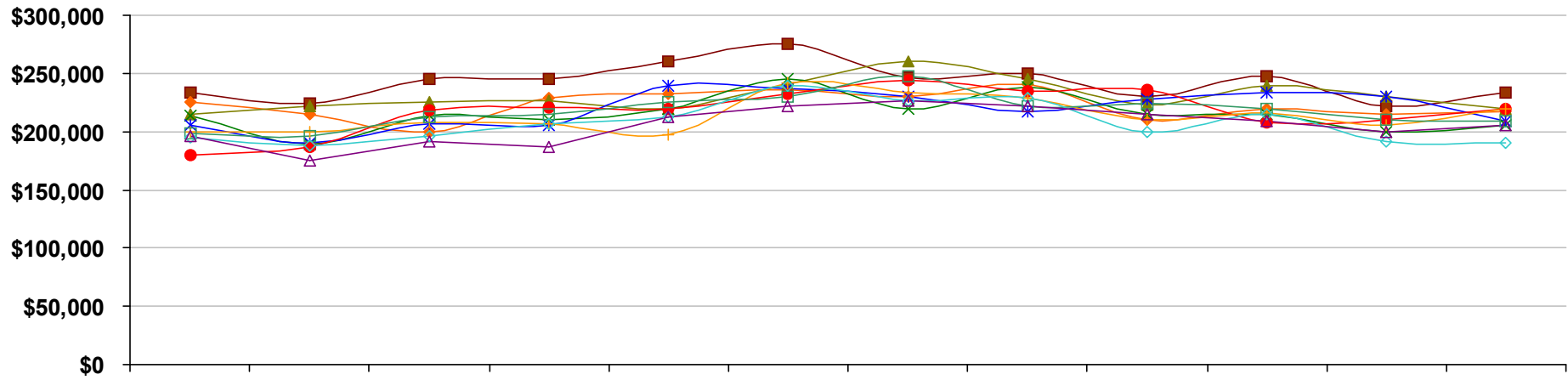
# Burlington County, NJ - Single-Family - Total Settled Volume



	Jan	Feb	Mar	Apr	May	Jun	Jul	Aug	Sep	Oct	Nov	Dec
2008	\$65 -22.8%	\$59 -36.2%	\$73 -38.0%	\$85 -25.9%	\$107 -17.2%	\$130 -24.9%	\$100 -31.7%	\$102 -30.3%	\$80 -5.7%	\$86 -5.1%	\$49 -50.7%	\$66 -12.6%
2009	\$44 -32.3%	\$46 -21.8%	\$51 -29.9%	\$58 -32.0%	\$75 -30.1%	\$94 -27.8%	\$98 -1.9%	\$101 -0.4%	\$75 -6.9%	\$95 10.4%	\$76 54.4%	\$71 8.1%
2010	\$44 0.0%	\$46 -0.3%	\$71 37.3%	\$83 43.6%	\$97 30.3%	\$116 23.8%	\$73 -26.2%	\$69 -31.6%	\$61 -18.9%	\$62 -34.9%	\$57 -24.5%	\$60 -15.9%
2011	\$47 7.2%	\$44 -4.8%	\$57 -19.2%	\$53 -35.4%	\$64 -34.0%	\$85 -26.9%	\$76 5.3%	\$85 22.5%	\$65 7.3%	\$64 4.1%	\$50 -11.9%	\$56 -6.4%
2012	\$46 -2.8%	\$40 -9.2%	\$63 9.7%	\$60 11.8%	\$82 28.3%	\$101 19.0%	\$86 12.8%	\$109 29.2%	\$85 30.7%	\$82 28.3%	\$93 84.0%	\$68 20.4%
2013	\$46 0.5%	\$43 9.0%	\$72 14.7%	\$89 49.6%	\$99 19.9%	\$126 25.0%	\$132 53.0%	\$132 20.9%	\$86 1.1%	\$88 7.2%	\$72 -22.0%	\$82 21.3%
2014	\$59 27.3%	\$46 6.4%	\$72 -0.4%	\$77 -14.1%	\$91 -7.6%	\$129 2.1%	\$122 -7.8%	\$116 -12.1%	\$96 11.4%	\$95 8.0%	\$80 11.6%	\$96 17.7%
2015	\$57 -2.0%	\$53 14.1%	\$86 20.3%	\$99 29.5%	\$118 29.2%	\$150 16.8%	\$157 29.2%	\$130 11.9%	\$116 20.9%	\$110 15.2%	\$83 3.1%	\$98 2.1%
2016	\$83 44.4%	\$63 18.7%	\$92 6.9%	\$109 9.3%	\$126 7.4%	\$173 15.3%	\$136 -13.4%	\$152 16.6%	\$112 -3.5%	\$103 -5.9%	\$92 11.0%	\$107 9.0%
2017	\$85 2.9%	\$73 16.0%	\$103 11.5%	\$104 -4.3%	\$144 14.3%	\$186 7.1%	\$159 17.1%	\$156 3.1%	\$139 24.4%	\$145 40.4%	\$119 29.6%	\$118 10.3%

Values on this report are displayed in Millions

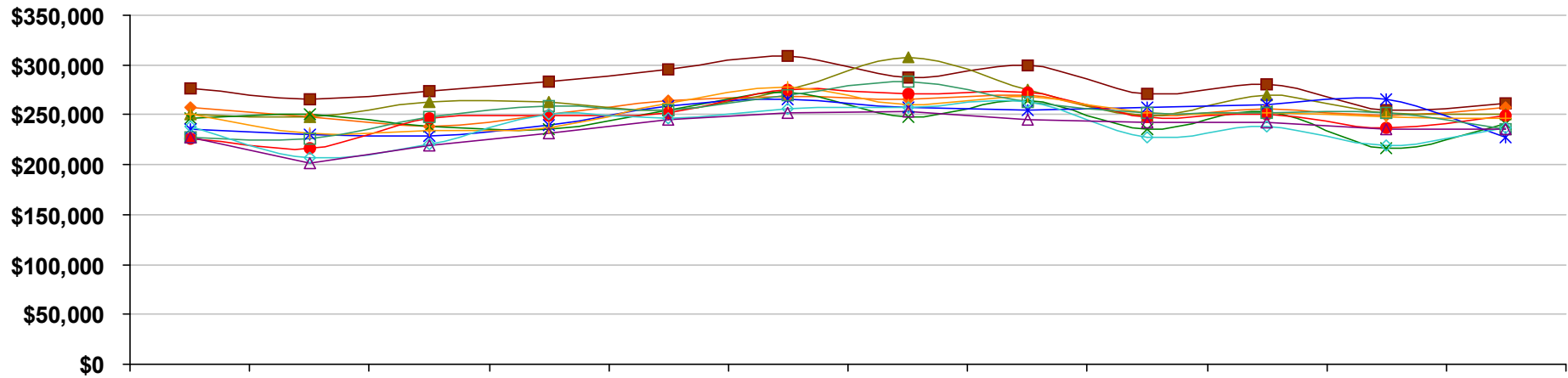
# Burlington County, NJ - Single-Family - Median Settled Price



	Jan	Feb	Mar	Apr	May	Jun	Jul	Aug	Sep	Oct	Nov	Dec
■ 2008	\$234,000 -11.7%	\$224,000 -9.3%	\$245,000 -2.0%	\$245,000 -2.0%	\$260,000 -1.9%	\$275,000 -3.5%	\$246,000 -10.5%	\$250,000 -9.1%	\$230,000 -11.5%	\$247,000 -1.2%	\$222,000 -7.5%	\$233,000 -3.7%
◆ 2009	\$225,000 -3.8%	\$215,000 -4.0%	\$200,000 -18.4%	\$229,000 -6.5%	\$232,000 -10.8%	\$236,000 -14.2%	\$230,000 -6.5%	\$240,000 -4.0%	\$210,000 -8.7%	\$220,000 -10.9%	\$215,000 -3.2%	\$217,000 -6.9%
▲ 2010	\$215,000 -4.4%	\$222,000 3.3%	\$225,000 12.5%	\$226,000 -1.3%	\$220,000 -5.2%	\$240,000 1.7%	\$260,000 13.0%	\$245,000 2.1%	\$223,000 6.2%	\$239,000 8.6%	\$230,000 7.0%	\$220,000 1.4%
✕ 2011	\$214,000 -0.5%	\$189,000 -14.9%	\$214,000 -4.9%	\$210,000 -7.1%	\$219,000 -0.5%	\$245,000 2.1%	\$220,000 -15.4%	\$238,000 -2.9%	\$215,000 -3.6%	\$215,000 -10.0%	\$200,000 -13.0%	\$205,000 -6.8%
✱ 2012	\$206,000 -3.7%	\$190,000 0.5%	\$207,000 -3.3%	\$205,000 -2.4%	\$239,000 9.1%	\$237,000 -3.3%	\$230,000 4.5%	\$217,000 -8.8%	\$228,000 6.0%	\$233,000 8.4%	\$230,000 15.0%	\$209,000 2.0%
● 2013	\$180,000 -12.6%	\$187,000 -1.6%	\$218,000 5.3%	\$221,000 7.8%	\$219,000 -8.4%	\$232,000 -2.1%	\$244,000 6.1%	\$235,000 8.3%	\$236,000 3.5%	\$208,000 -10.7%	\$210,000 -8.7%	\$220,000 5.3%
+ 2014	\$200,000 11.1%	\$200,000 7.0%	\$208,000 -4.6%	\$207,000 -6.3%	\$197,000 -10.0%	\$242,000 4.3%	\$233,000 -4.5%	\$229,000 -2.6%	\$210,000 -11.0%	\$216,000 3.8%	\$205,000 -2.4%	\$220,000 0.0%
□ 2015	\$198,000 -1.0%	\$196,000 -2.0%	\$212,000 1.9%	\$215,000 3.9%	\$225,000 14.2%	\$230,000 -5.0%	\$248,000 6.4%	\$222,000 -3.1%	\$224,000 6.7%	\$220,000 1.9%	\$210,000 2.4%	\$209,000 -5.0%
◇ 2016	\$195,000 -1.5%	\$188,000 -4.1%	\$196,000 -7.5%	\$207,000 -3.7%	\$213,000 -5.3%	\$239,000 3.9%	\$227,000 -8.5%	\$229,000 3.2%	\$200,000 -10.7%	\$215,000 -2.3%	\$192,000 -8.6%	\$190,000 -9.1%
△ 2017	\$196,000 0.5%	\$175,000 -6.9%	\$192,000 -2.0%	\$187,000 -9.7%	\$213,000 0.0%	\$222,000 -7.1%	\$226,000 -0.4%	\$222,000 -3.1%	\$215,000 7.5%	\$209,000 -2.8%	\$200,000 4.2%	\$206,000 8.4%



## Burlington County, NJ - Single-Family - Average Settled Price

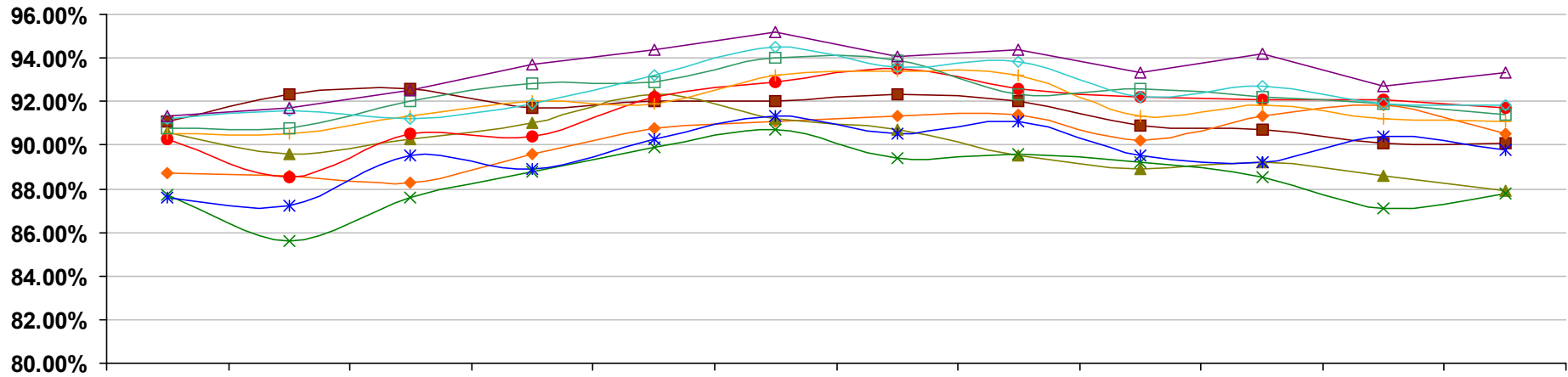


	Jan	Feb	Mar	Apr	May	Jun	Jul	Aug	Sep	Oct	Nov	Dec
■ 2008	\$276,000 -16.1%	\$265,000 -5.4%	\$274,000 -8.7%	\$283,000 -5.0%	\$295,000 -3.6%	\$309,000 -4.9%	\$288,000 -8.6%	\$299,000 -2.9%	\$271,000 -7.5%	\$281,000 2.6%	\$254,000 -10.6%	\$262,000 -8.7%
◆ 2009	\$258,000 -6.5%	\$248,000 -6.4%	\$238,000 -13.1%	\$250,000 -11.7%	\$264,000 -10.5%	\$268,000 -13.3%	\$265,000 -8.0%	\$269,000 -10.0%	\$249,000 -8.1%	\$256,000 -8.9%	\$249,000 -2.0%	\$258,000 -1.5%
▲ 2010	\$250,000 -3.1%	\$248,000 0.0%	\$263,000 10.5%	\$263,000 5.2%	\$254,000 -3.8%	\$275,000 2.6%	\$308,000 16.2%	\$275,000 2.2%	\$249,000 0.0%	\$270,000 5.5%	\$252,000 1.2%	\$250,000 -3.1%
✕ 2011	\$246,000 -1.6%	\$251,000 1.2%	\$239,000 -9.1%	\$235,000 -10.6%	\$255,000 0.4%	\$273,000 -0.7%	\$248,000 -19.5%	\$264,000 -4.0%	\$236,000 -5.2%	\$253,000 -6.3%	\$217,000 -13.9%	\$241,000 -3.6%
✱ 2012	\$235,000 -4.5%	\$230,000 -8.4%	\$229,000 -4.2%	\$240,000 2.1%	\$259,000 1.6%	\$266,000 -2.6%	\$257,000 3.6%	\$255,000 -3.4%	\$257,000 8.9%	\$260,000 2.8%	\$266,000 22.6%	\$228,000 -5.4%
● 2013	\$226,000 -3.8%	\$217,000 -5.7%	\$246,000 7.4%	\$249,000 3.8%	\$252,000 -2.7%	\$275,000 3.4%	\$271,000 5.4%	\$273,000 7.1%	\$248,000 -3.5%	\$250,000 -3.8%	\$237,000 -10.9%	\$249,000 9.2%
✚ 2014	\$250,000 10.6%	\$232,000 6.9%	\$234,000 -4.9%	\$237,000 -4.8%	\$261,000 3.6%	\$278,000 1.1%	\$260,000 -4.1%	\$268,000 -1.8%	\$252,000 1.6%	\$252,000 0.8%	\$248,000 4.6%	\$246,000 -1.2%
□ 2015	\$227,000 -9.2%	\$226,000 -2.6%	\$248,000 6.0%	\$259,000 9.3%	\$254,000 -2.7%	\$269,000 -3.2%	\$283,000 8.8%	\$263,000 -1.9%	\$252,000 0.0%	\$252,000 0.0%	\$252,000 1.6%	\$236,000 -4.1%
◇ 2016	\$238,000 4.8%	\$207,000 -8.4%	\$221,000 -10.9%	\$250,000 -3.5%	\$247,000 -2.8%	\$256,000 -4.8%	\$257,000 -9.2%	\$263,000 0.0%	\$228,000 -9.5%	\$238,000 -5.6%	\$219,000 -13.1%	\$237,000 0.4%
△ 2017	\$227,000 -4.6%	\$202,000 -2.4%	\$219,000 -0.9%	\$231,000 -7.6%	\$245,000 -0.8%	\$252,000 -1.6%	\$253,000 -1.6%	\$245,000 -6.8%	\$242,000 6.1%	\$243,000 2.1%	\$235,000 7.3%	\$236,000 -0.4%

Market History Report © 2017 TREND. Compiled 1/10/2018. Information deemed reliable, but not guaranteed. Non-members contact TREND for reprint permission.

TREND • 660 American Avenue, Suite 203 • King of Prussia, PA 19406 • 1-877-330-9900 • www.trendmls.com

## Burlington County, NJ - Single-Family - Average Settled Price/Original Price



	Jan	Feb	Mar	Apr	May	Jun	Jul	Aug	Sep	Oct	Nov	Dec
■ 2008	91.1% -2.1%	92.3% -1.9%	92.6% -2.9%	91.7% -3.3%	92.0% -2.8%	92.0% -3.1%	92.3% -2.5%	92.0% -2.0%	90.9% -2.8%	90.7% -2.7%	90.1% -2.5%	90.1% -1.7%
◆ 2009	88.7% -2.6%	88.6% -4.0%	88.3% -4.6%	89.6% -2.3%	90.8% -1.4%	91.1% -1.0%	91.3% -1.1%	91.4% -0.6%	90.2% -0.8%	91.3% 0.7%	91.8% 1.9%	90.5% 0.4%
▲ 2010	90.6% 2.1%	89.6% 1.2%	90.3% 2.3%	91.0% 1.6%	92.3% 1.6%	91.2% 0.1%	90.7% -0.6%	89.5% -2.1%	88.9% -1.5%	89.2% -2.3%	88.6% -3.6%	87.9% -2.9%
× 2011	87.7% -3.1%	85.6% -4.5%	87.6% -3.0%	88.8% -2.5%	89.9% -2.6%	90.7% -0.6%	89.4% -1.5%	89.6% 0.0%	89.2% 0.4%	88.5% -0.8%	87.1% -1.7%	87.8% -0.1%
✱ 2012	87.6% -0.1%	87.2% 1.9%	89.5% 2.2%	88.9% 0.2%	90.3% 0.5%	91.3% 0.7%	90.5% 1.3%	91.1% 1.7%	89.5% 0.3%	89.2% 0.8%	90.4% 3.8%	89.8% 2.3%
● 2013	90.3% 3.0%	88.5% 1.4%	90.5% 1.1%	90.4% 1.7%	92.2% 2.1%	92.9% 1.8%	93.5% 3.3%	92.6% 1.6%	92.2% 3.1%	92.1% 3.2%	92.1% 1.8%	91.7% 2.0%
+ 2014	90.5% 0.2%	90.5% 2.3%	91.3% 0.9%	92.0% 1.8%	91.9% -0.4%	93.2% 0.4%	93.4% -0.1%	93.2% 0.6%	91.3% -0.9%	91.8% -0.2%	91.2% -0.9%	91.1% -0.6%
□ 2015	90.8% 0.3%	90.8% 0.3%	92.0% 0.7%	92.8% 0.9%	92.9% 1.1%	94.0% 0.9%	93.9% 0.5%	92.3% -0.9%	92.6% 1.4%	92.2% 0.4%	91.9% 0.7%	91.4% 0.3%
◇ 2016	91.2% 0.5%	91.6% 0.9%	91.2% -0.8%	91.9% -1.0%	93.2% 0.4%	94.5% 0.4%	93.6% -0.4%	93.8% 1.6%	92.2% -0.4%	92.7% 0.5%	91.9% 0.0%	91.8% 0.4%
△ 2017	91.3% 0.2%	91.7% 0.1%	92.5% 1.5%	93.7% 2.0%	94.4% 1.3%	95.2% 0.8%	94.1% 0.6%	94.4% 0.6%	93.3% 1.1%	94.2% 1.6%	92.7% 0.9%	93.3% 1.7%

Market History Report © 2017 TREND. Compiled 1/10/2018. Information deemed reliable, but not guaranteed. Non-members contact TREND for reprint permission.

TREND • 660 American Avenue, Suite 203 • King of Prussia, PA 19406 • 1-877-330-9900 • www.trendmls.com